

## Information session

# Establishing the Independent Panel on Evidence for Action against Antimicrobial Resistance (IPEA)

Quadripartite Joint Secretariat on AMR  
FAO | UNEP | WHO | WOAH

Establishment of IPEA  
Information session  
18 and 19 November 2025



100%

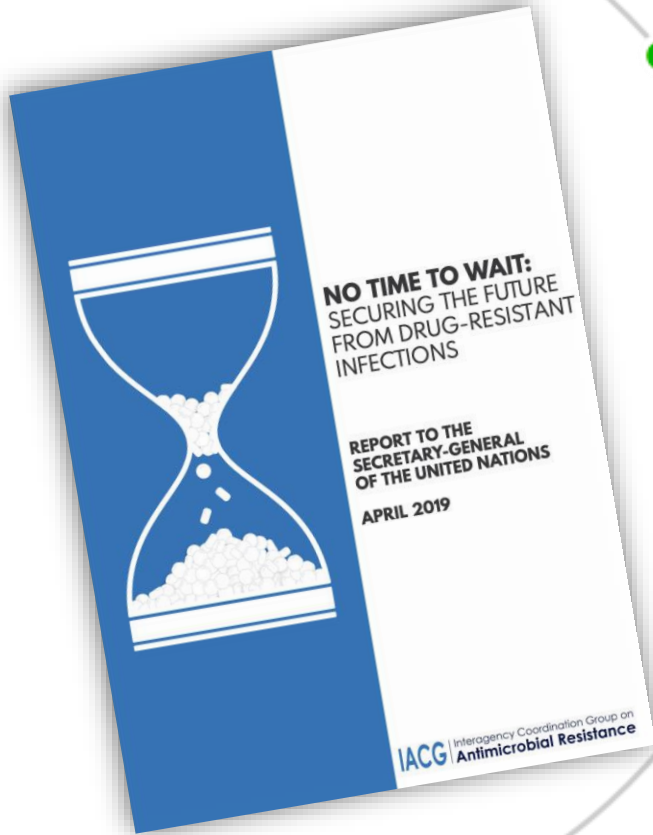


The infographic illustrates the roles of four United Nations agencies in the One Health approach. On the left, a Venn diagram shows the overlap of the World Health Organization (WHO), Food and Agriculture Organization of the United Nations (FAO), World Organisation for Animal Health (WOAH), and the United Nations Environment Programme (UNEP). On the right, five key functions are listed, each associated with a blue circle of varying size, connected by a curved line to the central Venn diagram.

- Support global promotion, advocacy and stakeholders engagement
- Support Global governance structures – including GLG, MSPP and upcoming IPEA
- Coordination and monitoring of Quadripartite Strategic Plan and workplan implementation and mapping gaps & opportunities
- Support the Multi Partner Trust Fund
- Coordination and partnership

2

# AMR Global Governance Structures



## Global Leaders Group (GLG)

- Established in November 2020
- Led by H.E Mia Amor Motley, other political leaders
- Catalyzing Political action for AMR

## AMR Multi-Stakeholder Partnership Platform

- Established November in 2022
- Hosting 300 entities from One Health sectors
- Building a shared vision and driving collective action via 13 Action Groups, 5 stakeholder clusters and a General Plenary Assembly

## Independent Panel on Evidence for Action Against AMR (IPEA)

In process of establishment based on IACG recommendations (2019) and UNGA HLM on AMR (2024)

# UNGA Political Declaration of the High-Level Meeting on Antimicrobial Resistance—Our Reference Point

- Quadripartite organizations were invited to establish an **independent panel** on evidence for action against AMR in 2024
- Scope and objectives of the Panel

To **facilitate the generation and use of multisectoral, scientific evidence** to **support Member States** to tackle AMR

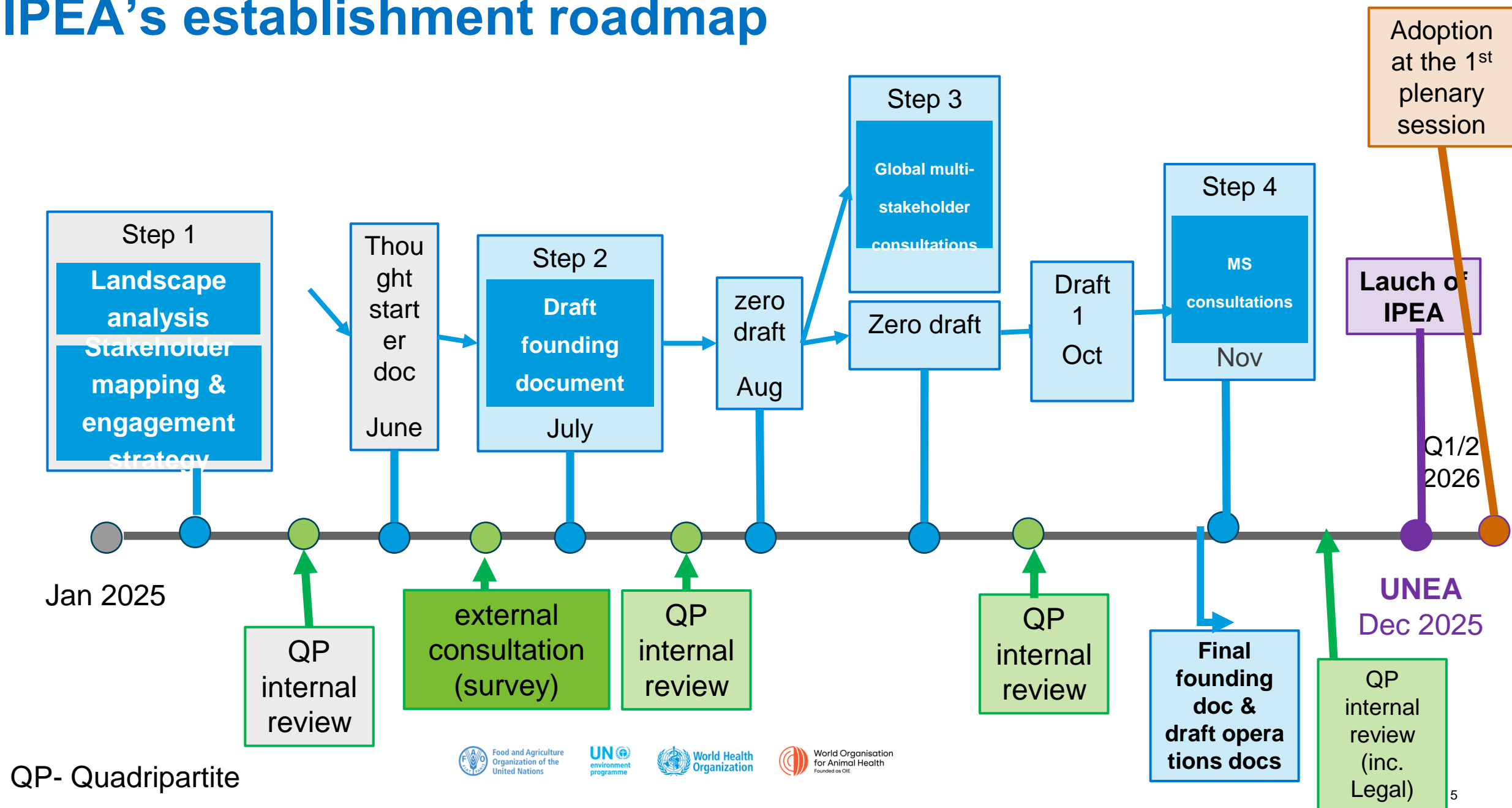
- How will this be achieved?

Using **existing resources and avoiding duplication of on-going efforts**, after an open and transparent consultation with all Member States on its composition, mandate, scope, and deliverables.



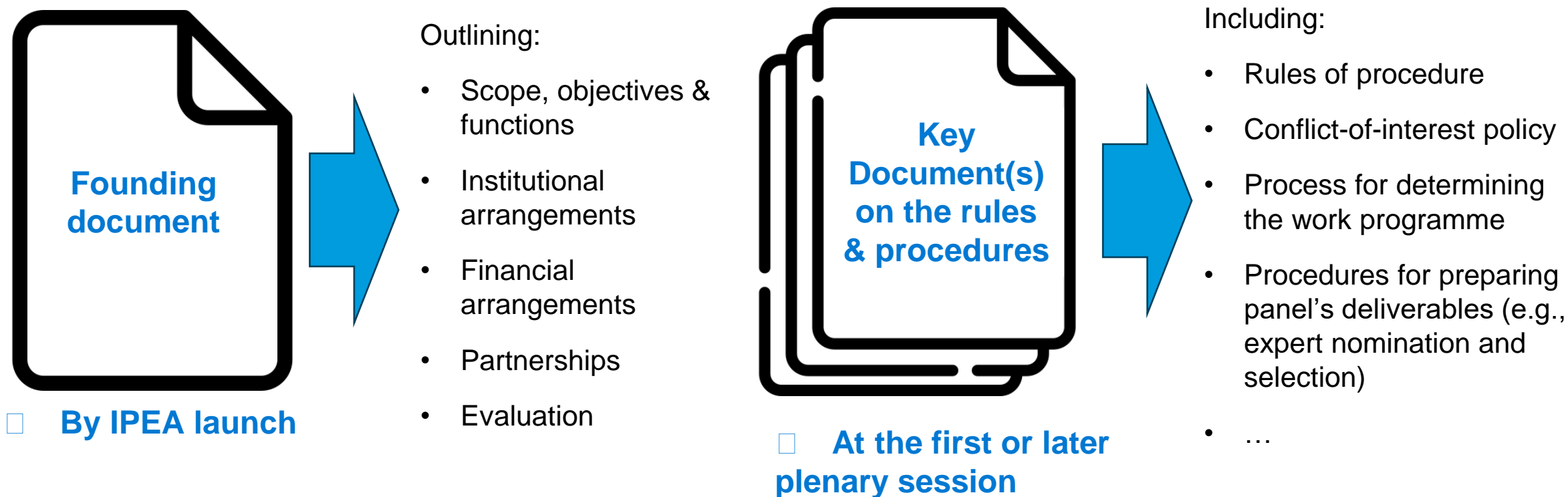


# IPEA's establishment roadmap



# Key Elements for IPEA's Establishment & Operations

Building upon existing science-policy panels, a **strong Panel** typically has...



# Functions and Outputs of the Panel



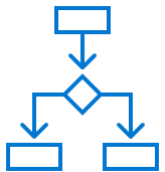
- **Assessments:** conducting independent, robust and authoritative assessments of current issues and identifying potential evidence-based options to address them



- **Horizon scanning:** identify and prioritize overlooked and emerging trends, risks and impacts, and appropriate responses



- **Knowledge management:** share information, and identify and highlight research gaps, etc.



- **Policy support:** develop tools and methodologies based on its deliverables to guide decision-making at all levels

# IPEA





# IPEA



# Expert Committee

*Decision-making group. Providing strategic direction and oversight*

## Members:

- 30 independent experts in individual capacity representing different fields.
- Led by 2 co-chairs and 2 vice co-chairs and a Rapporteur
- Selection based on expertise and knowledge of the Panel's work
- **Ex-Officio:** Quadripartite representatives
- **Observers:** qualified in matters covered by the Panel, have informed the Secretariat of their wish to be represented, and have been admitted by the Expert Committee.
- **Terms:** 2/3 yrs, Staggered. Duration
- **Selection criteria:**
  - Professional and political experience;
  - Scientific or technical expertise and knowledge in AMR
  - Experience in communicating about and promoting science and incorporating it into policy development processes;
  - Demonstrated ability to work in international scientific and policy processes
- **Nomination:** open call for expression of interest.
- **Election:** By consensus or vote, if decided.

# Expert Committee - Functions

- Leading the **development and approval** of the Panel's **work programme and its budget**;
- Ensuring the active and efficient participation of **observers** in the meetings of the Expert Committee, and coordination with other relevant **AMR governance structures, instruments and bodies**;
- Overseeing the **implementation** of the Panel's **work programme**, including the allocation of resources, and providing recommendations for the **mobilization of resources**;
- Establishing and closing **subsidiary groups** of the Panel, including *ad hoc* expert groups, and selecting their members;
- **Engaging the scientific community and other knowledge holders** in the implementation of the work programme, and ensuring equitable and effective participation of experts;
- Developing and managing a transparent **peer-review process** for the Panel's deliverables;
- **Clearing any deliverables** produced by the Panel;
- Driving **communication, outreach and the dissemination** of any deliverables produced by the Panel to enhance their **impact on policy-making processes**;
- Reviewing and approving the Panel's rules, policies, processes, procedures, and their amendments.

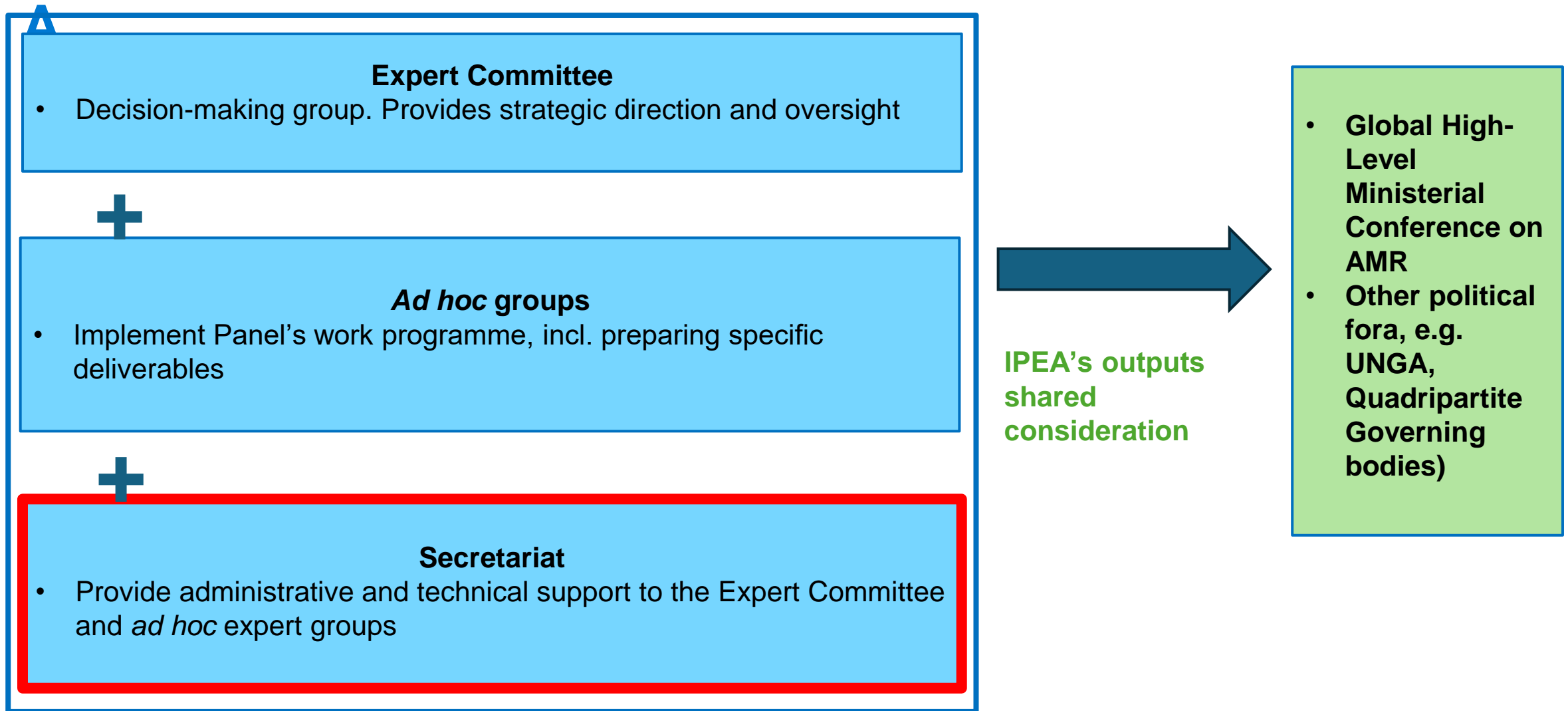
# IPEA



# Ad hoc groups

- The Expert Committee may establish any subsidiary groups **to realize specific objectives**, such as time-bound ad hoc expert working groups preparing defined deliverables in an agreed work programme.
- The Expert Committee shall determine the **matters** to be considered by, **and** establish the **ToR** of any subsidiary group.
- A separate procedural document will define procedures for the **preparation and clearance of deliverables** by *ad hoc* expert working groups, including the nomination and selection of experts by the Expert Committee.
- The **rules of procedure** will apply to the proceedings of the subsidiary groups.
- Each subsidiary group shall elect its **own officers** such as co-chairs and rapporteurs.

# IPE





# Secretariat - Functions

- Providing **technical and administrative support** to the Expert Committee and any subsidiary groups to the Panel to undertake their respective functions;
- **Drafting the work programme** for approval by the Expert Committee, as well as **coordinating and supporting its implementation** in consultation with the Expert Committee;
- **Monitoring and reporting progress** to the Expert Committee on implementation of the approved work programme and budget, and **assisting in the evaluation of the Panel's work**;
- **Mobilizing and managing the financial resources** and managing **contractual and legal matters** related to the Panel;
- **Disseminating the Panel's deliverables and conducting outreach activities** in consultation with the Expert Committee;
- Organizing **meetings** and providing support for meetings, including the preparation of documents and reports to the Expert Committee;
- **Enabling stakeholder participation** in cooperation with the AMR Multi-stakeholder Partnership Platform;
- Proposing **partnerships** for consideration of the Expert Committee, and supporting the implementation of any partnerships as guided by the Expert Committee.

*The Panel's Secretariat is jointly facilitated by FAO, UNEP, WHO and WOAH and is hosted by UNEP. All four organizations will coordinate the implementation of the Secretariat's functions.*

# IPEA

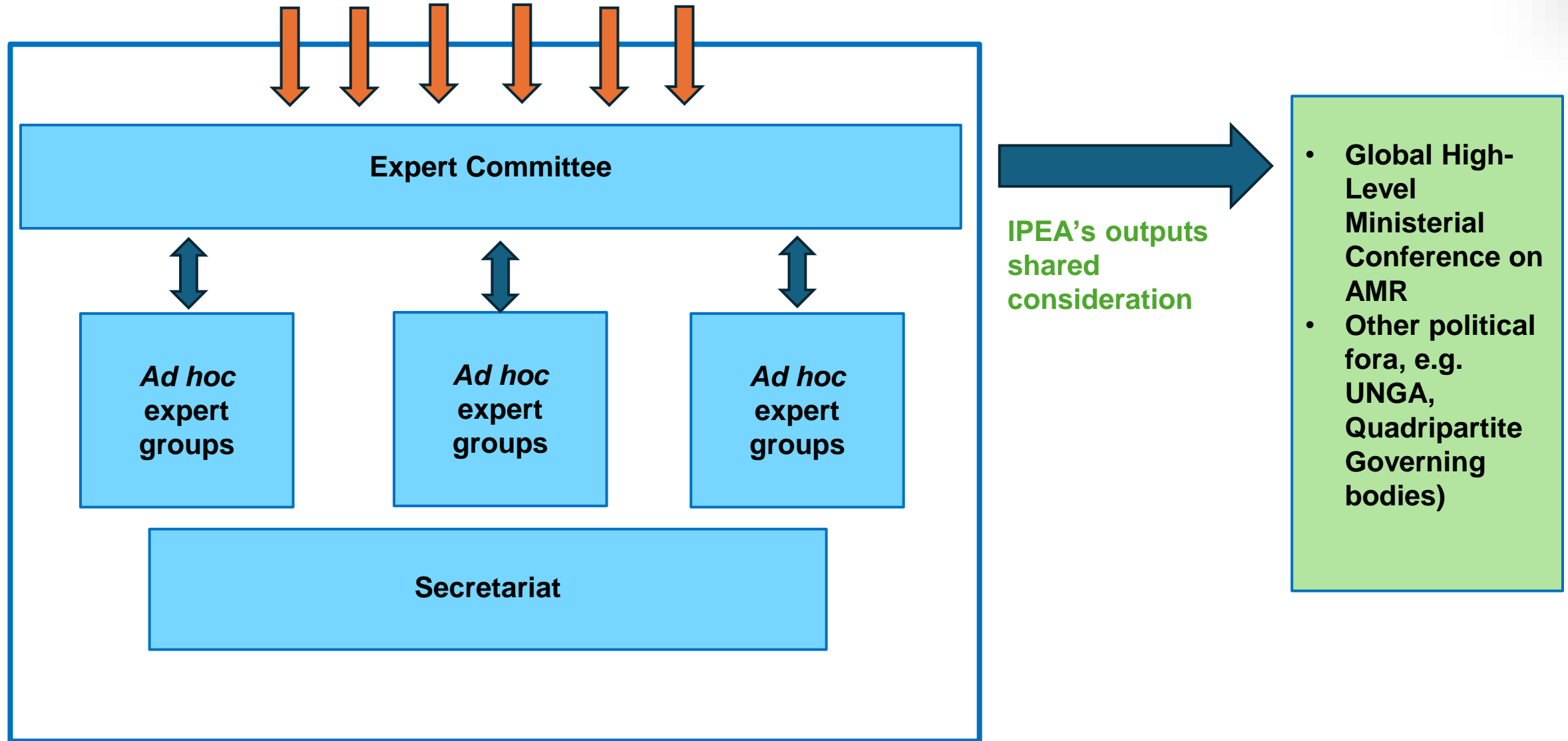


IPEA's outputs  
shared  
consideration

- **Global High-Level Ministerial Conference on AMR**
- **Other political fora, e.g. UNGA, Quadripartite Governing bodies)**

**Receive and provide platform for policy exchanges** on the outputs/deliverables produced by the Panel to enhance their **impact on policy-making processes**

# Flow of requests and suggestions for the panel work programme (from MSs, other stakeholders)



# Financial arrangements

A **dedicated financial mechanism** will be made available, **leveraging existing financial mechanisms and resources** to:

- Collect voluntary public and private contributions to support the work of the Panel, with a due diligence process to avoid conflict of interest;
- Be governed by the relevant financial rules and procedures.

The **contributions to the financial mechanism**:

- Will come without conditionalities;
- Will not orient the work of the Panel;
- Cannot be earmarked for specific activities, unless otherwise decided by the Expert Committee in accordance with the financial rules and procedures.

**In-kind contributions** will come without conditionalities from governments, the scientific community, other knowledge holders and stakeholders, and will be key to the success of the implementation of the work programme.



Food and Agriculture  
Organization of the  
United Nations



World Health  
Organization



World Organisation  
for Animal Health  
Founded as OIE

# THANK YOU

## Stay engaged:

QJS email: [amr-qjs@who.int](mailto:amr-qjs@who.int)

